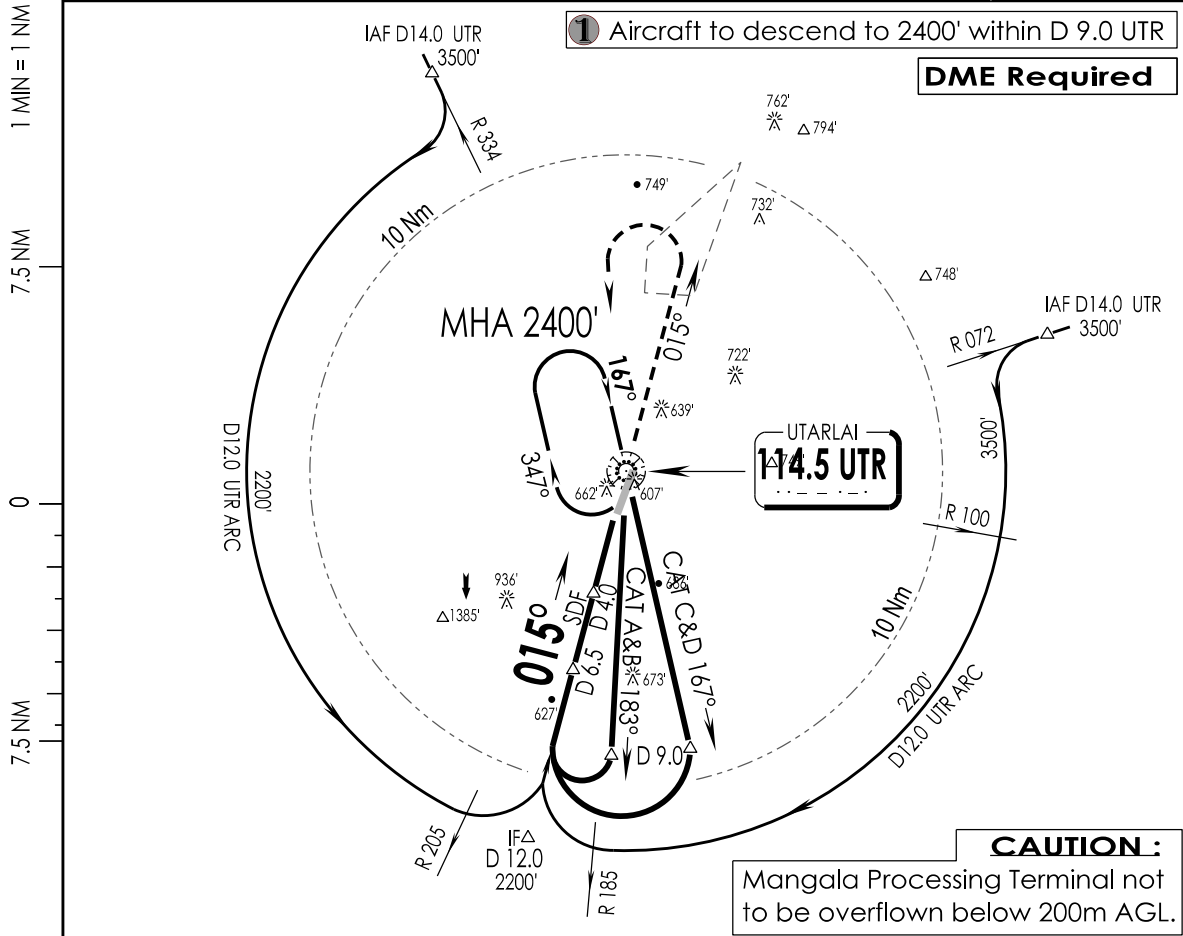


VIUT  
UTTARLAI

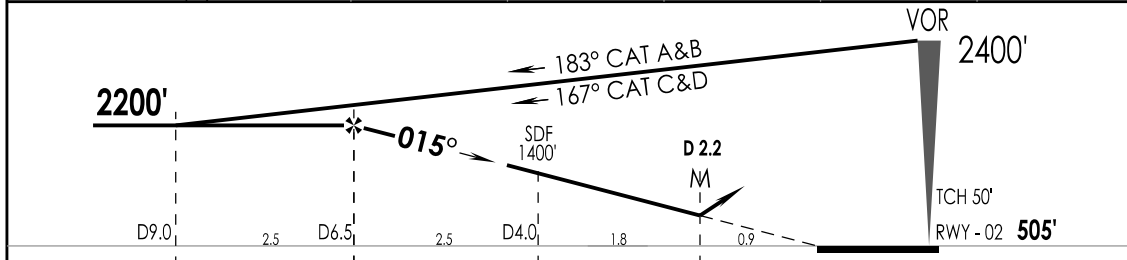
IAF  
14 FEB 19

UTTARLAI, INDIA  
VOR Z RWY 02

UTTARLAI Tower 123.2, VC, UC		UTTARLAI Approach 123.2, VC, UC		ATIS 114.5	
VOR UTR <b>114.5</b>	FINAL Apch Crs <b>015°</b>	FAF D 6.5 UTR <b>2200'</b>	MDA (H) <b>810' (305')</b>	Apt Elev 505' RWY <b>505'</b>	
<p><b>MISSED APCH:</b> Climb STRAIGHT ahead to 1600', then climbing Turn Left to join VOR hold at 2400' or as directed by ATC.</p>					
Alt Set: hPa	Rwy Elev: 17 hPa	Trans level: By ATC	Trans alt: 4000'	MSA UTR VOR	



UTR DME	6.5	6.0	5.0	4.0	3.0
ALTITUDE (ft)	2200	2040	1720	1400	1090



GND SPEED KTS	80	100	120	140	160	180	↑ 1600'	↑ 2400'	
GRADIENT 5.2 %	425	531	637	743	849	955			
MAPt AT D 2.2 UTR									

STRAIGHT-IN LANDING RWY 02				CIRCLE - TO - LAND		
CDFA						
MDA(H) <b>810' (305')</b>						
IALS		ALS OUT		Max Kts	MDA (H)	VIS
A				100	<b>1170'</b> (665')	3300m
B				135		
C	RVR 1000m		RVR 1400m	180	<b>1330'</b> (825')	3800m
D				205		

LIGHTING : CAT-II (20), CL15M(02/20), HIRL 60 M (02/20), TL (02/20), HIALS (20), PAPI (02L/20R), SALS (02)

CHANGES : LIGHTING IPDC, DTE OF OPS (T & H)